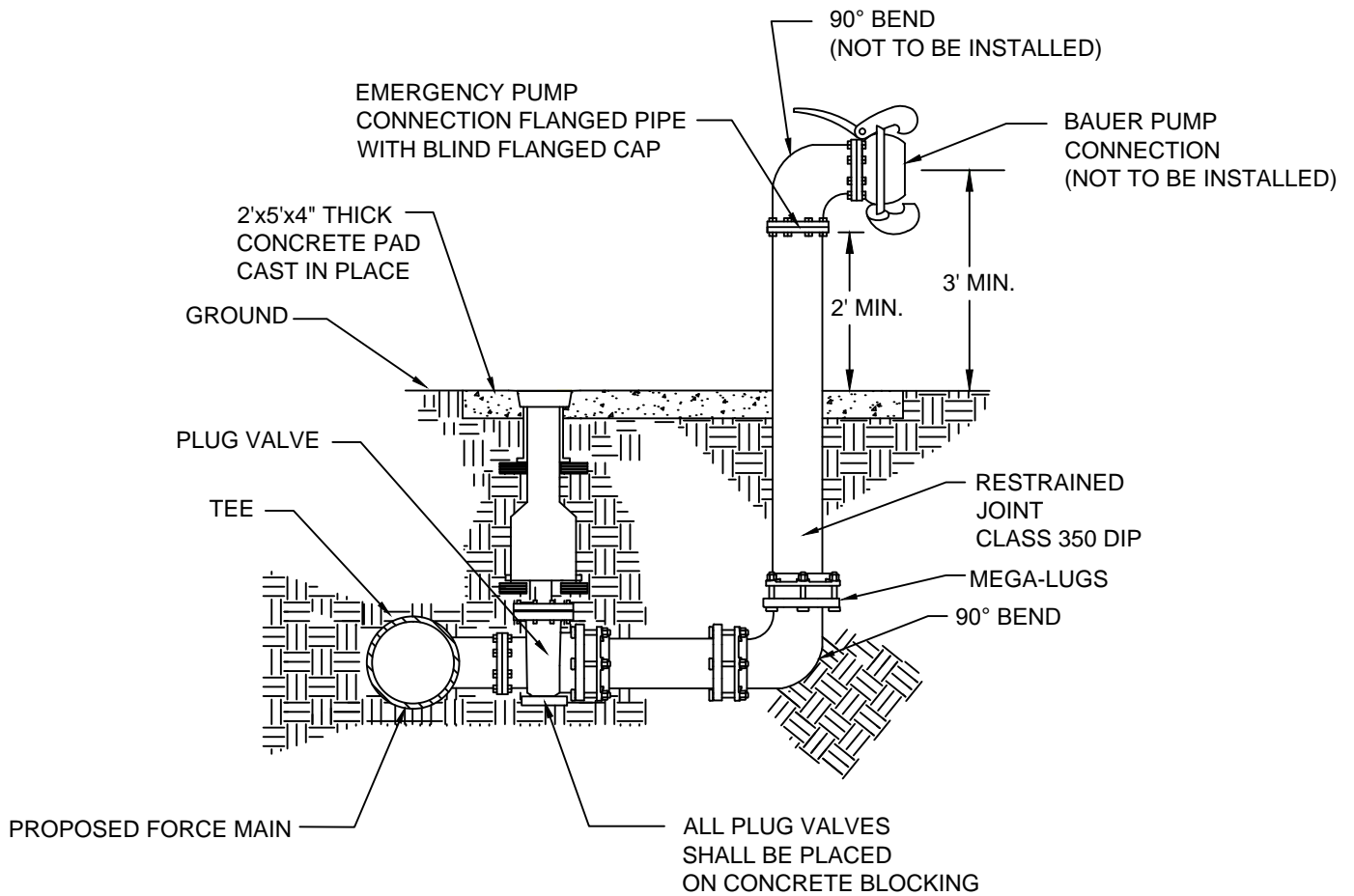
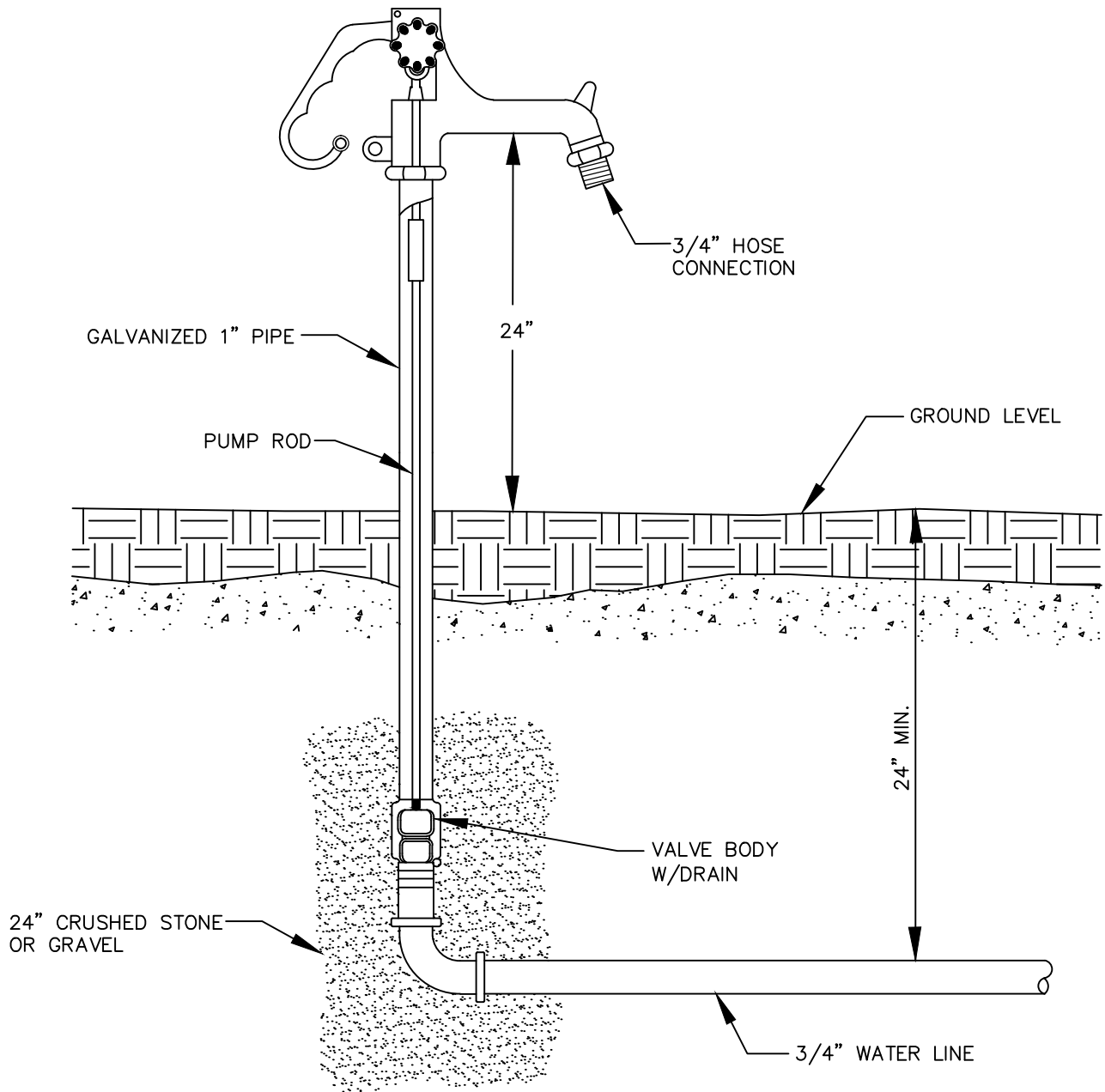


**NOTES:**

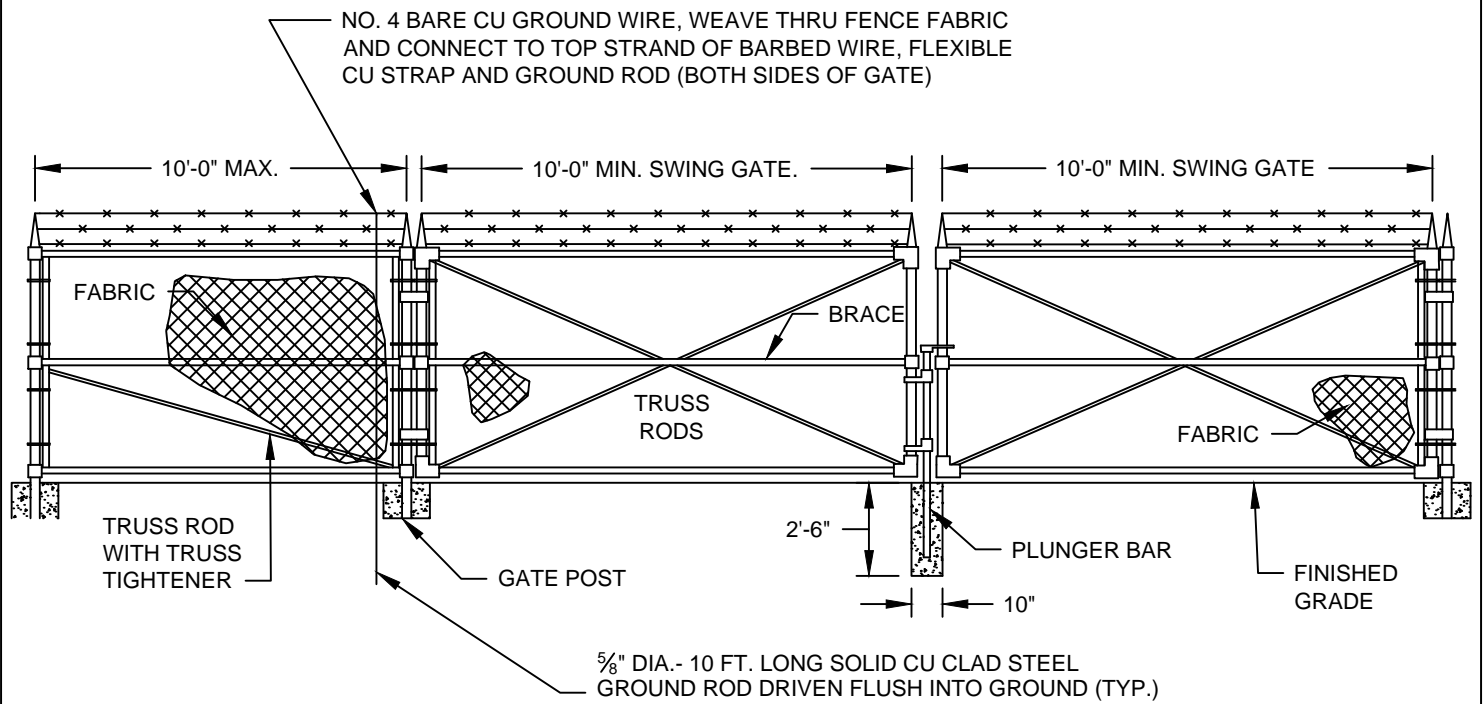
1. ALL MATERIALS AND INSTALLATION SHALL BE IN ACCORDANCE WITH MCPU STANDARDS.
2. ALL BELOW GRADE FITTINGS SHALL BE MECHANICAL JOINT.
3. ALL PIPE SHALL BE RESTRAINED JOINT D.I.P. CLASS 350
4. ALL PIPE AND FITTINGS TO BE LINED WITH PROTECTO 401 OR AN APPROVED EQUAL.



REVISED		MOORE COUNTY PUBLIC WORKS ENGINEERING DIVISION	EMERGENCY PUMP CONNECTION	STD NO.  PS-1
DATE	DESCRIPTION			



REVISED		MOORE COUNTY PUBLIC WORKS ENGINEERING DIVISION	SANITARY YARD HYDRANT	STD NO.  PS-2
DATE	DESCRIPTION			



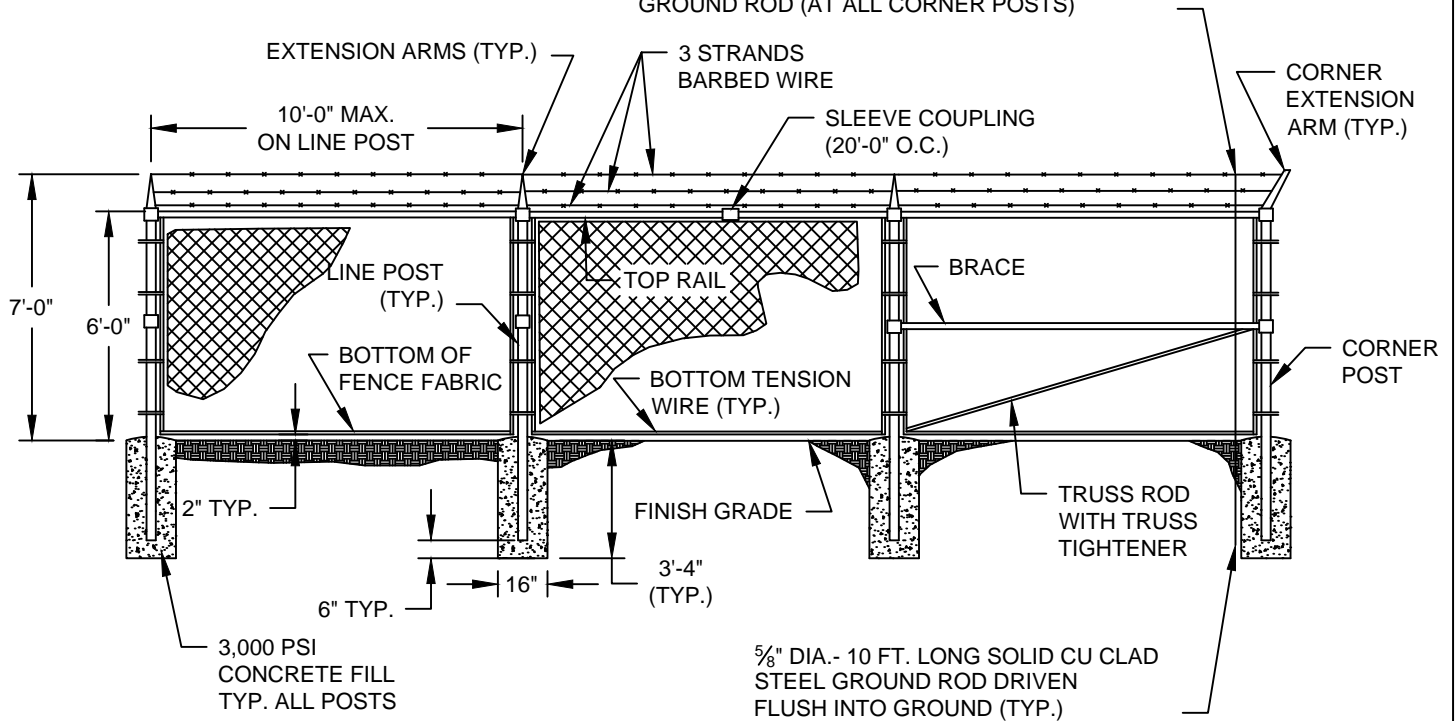
### GATE DETAILS

NOT TO SCALE

#### NOTES:

1. THE TOP OF FENCE SHALL BE LEVEL.
2. THE FINISHED GRADE UNDER FENCE SHALL BE LEVEL.

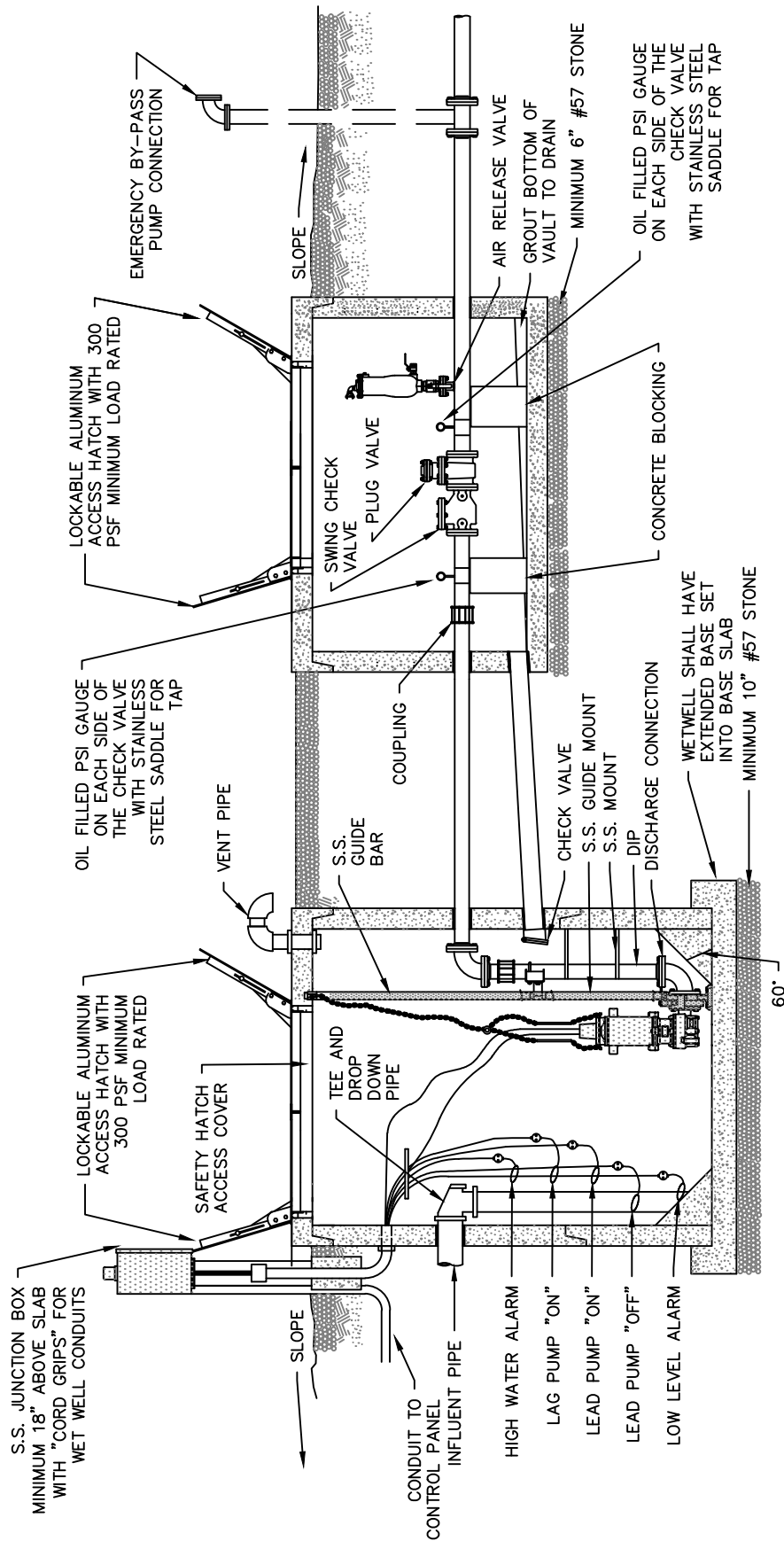
NO. 4 BARE CU GROUND WIRE, WEAVE THRU FENCE FABRIC AND CONNECT TO TOP STRAND OF BARBED WIRE, FLEXIBLE CU STRAP AND GROUND ROD (AT ALL CORNER POSTS)



### TYPICAL CHAIN LINK FENCE DETAIL

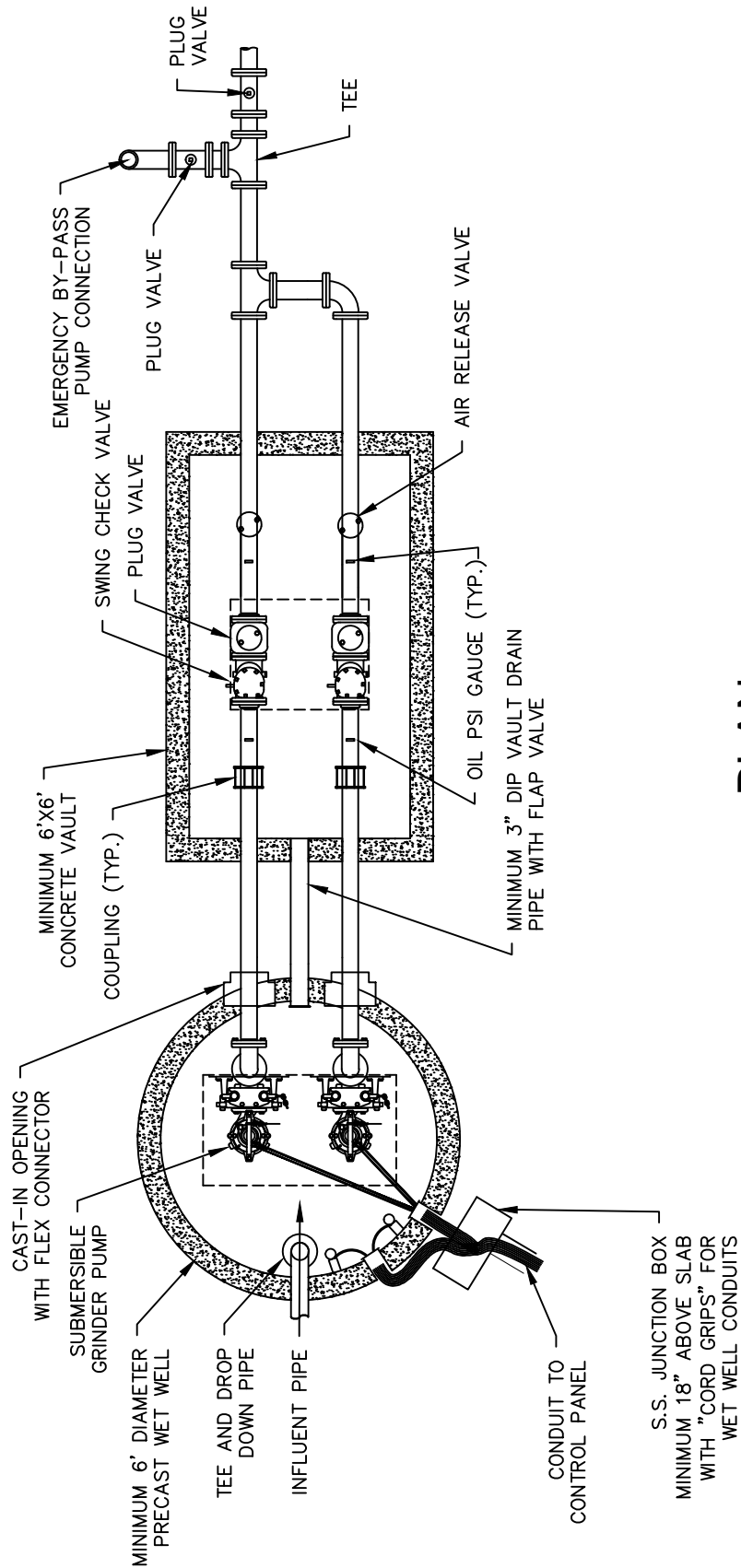
NOT TO SCALE

REVISED		MOORE COUNTY PUBLIC WORKS ENGINEERING DIVISION	CHAIN LINK FENCE	STD NO.  PS-3
DATE	DESCRIPTION			



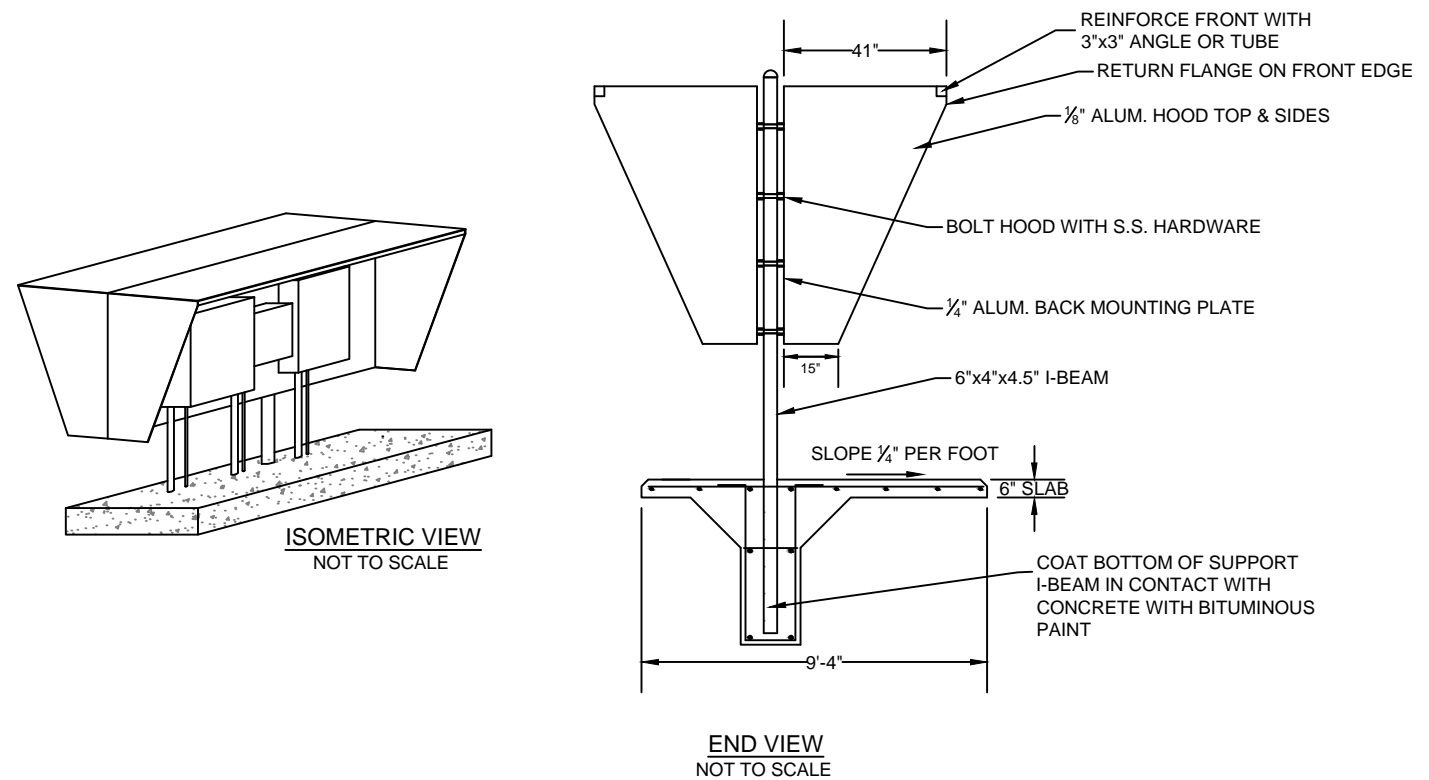
## SECTION

REVISED		MOORE COUNTY PUBLIC WORKS ENGINEERING DIVISION	SEWER LIFT STATION ELEVATION VIEW	STD NO.  PS-4
DATE	DESCRIPTION			

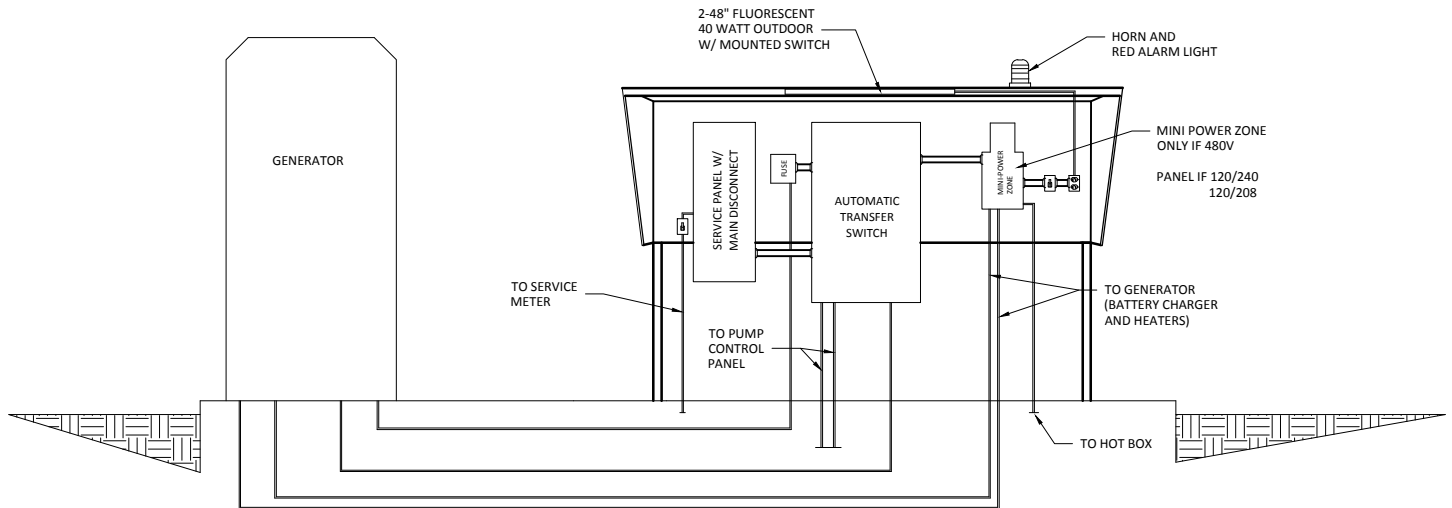
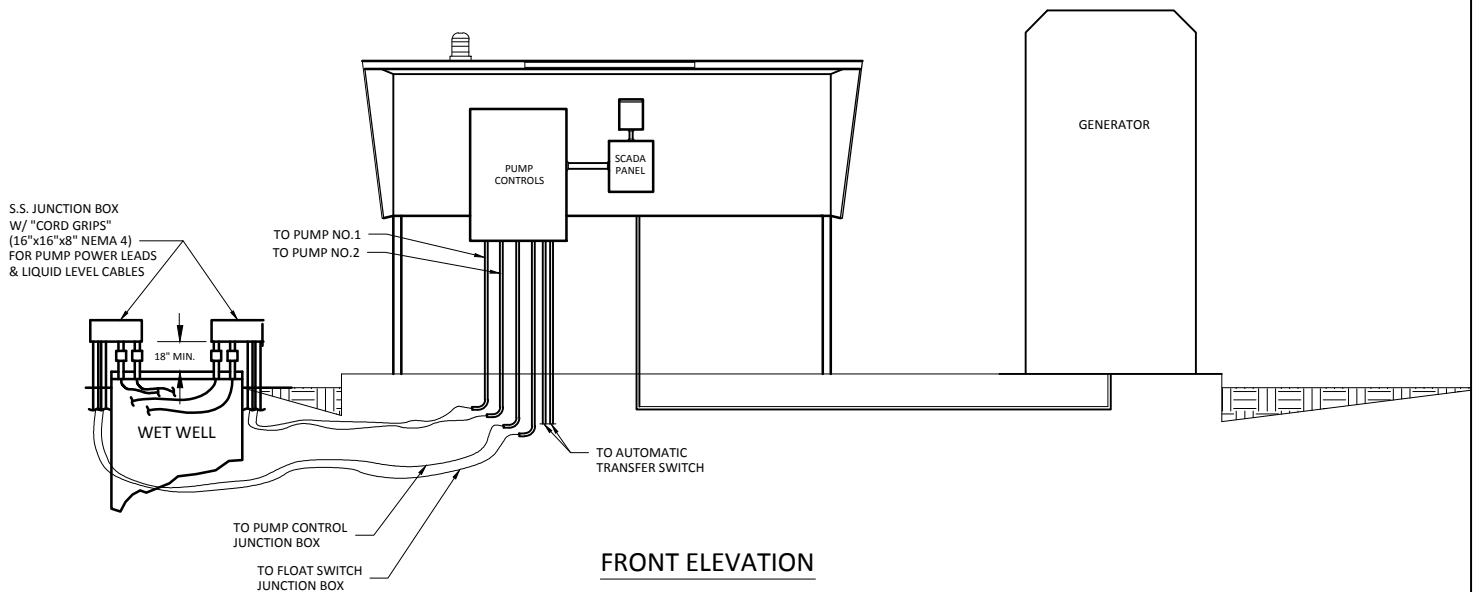


## PLAN

REVISED		MOORE COUNTY PUBLIC WORKS ENGINEERING DIVISION	SEWER LIFT STATION PLAN VIEW	STD NO. PS-5
DATE	DESCRIPTION			



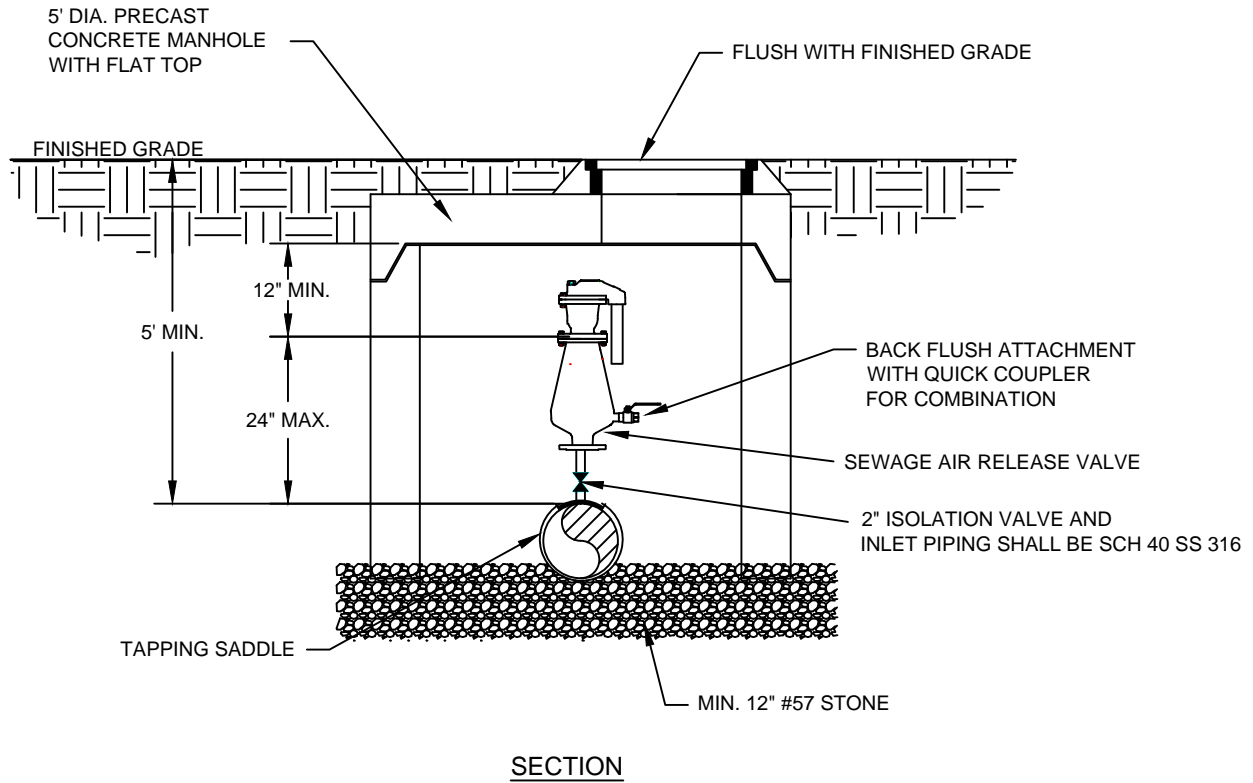
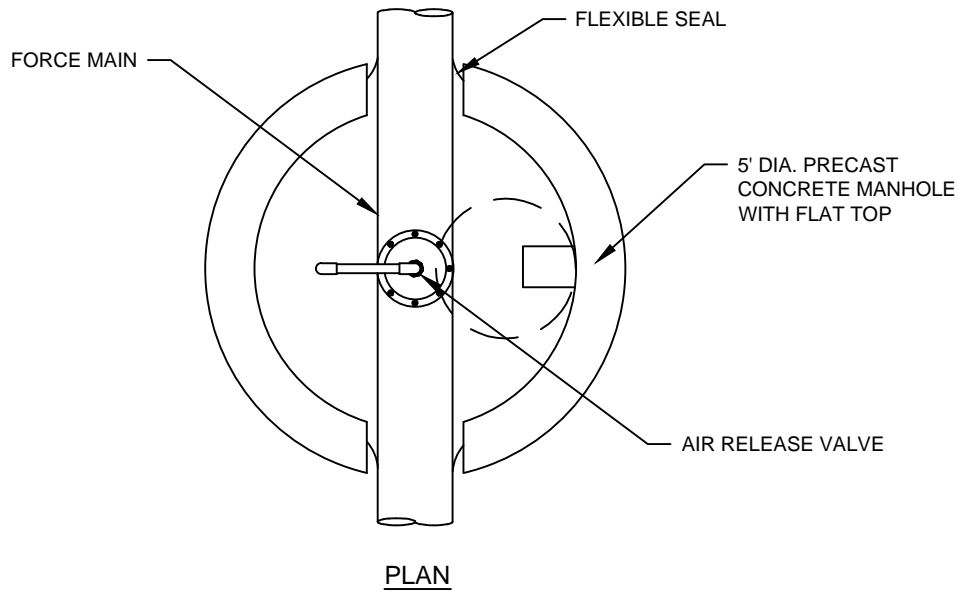
REVISED		MOORE COUNTY PUBLIC WORKS ENGINEERING DIVISION	RAINHOOD	STD NO.  PS-6
DATE	DESCRIPTION			



1. CONTRACTOR SHALL COORDINATE FINAL LOCATION OF SERVICE CONDUIT STUB OUT WITH UTILITY.
2. CONTRACTOR SHALL BE RESPONSIBLE FOR INSTALLATION AND TERMINATION OF CONDUCTORS ON SECONDARY OF SERVICE TRANSFORMER.
3. ALL EXPOSED CONDUITS TO BE PVC COATED RGS. ALL UNDERGROUND CONDUITS TO BE SCHEDULE 40 PVC.
4. ALL ENCLOSURES TO BE NEMA RATED FOR USE IN WET/CORROSIVE AREAS.

5. CABLE ENTERING CONTROL PANEL FROM WET WELL TO BE FED THROUGH CONDUIT STUB UPS THAT EXTEND TO BOTTOM OF ENCLOSURE. AFTER INSTALLATION OF CABLES, SEAL CONDUITS WITH RTU SEALANT.
6. CONTRACTOR SHALL PROVIDE METERING EQUIPMENT PER PROGRESS ENERGY REQUIREMENT.
7. ALL FASTENERS SHALL BE SS BOLTS, NUTS, & WASHERS W/ NEOPRENE GASKETS.
8. USE COPPER CONDUCTORS W/600 VOLT "THWN-THHN" INSULATION.

REVISED		MOORE COUNTY PUBLIC WORKS ENGINEERING DIVISION	ELECTRICAL RISER	STD NO.  PS-7
DATE	DESCRIPTION			



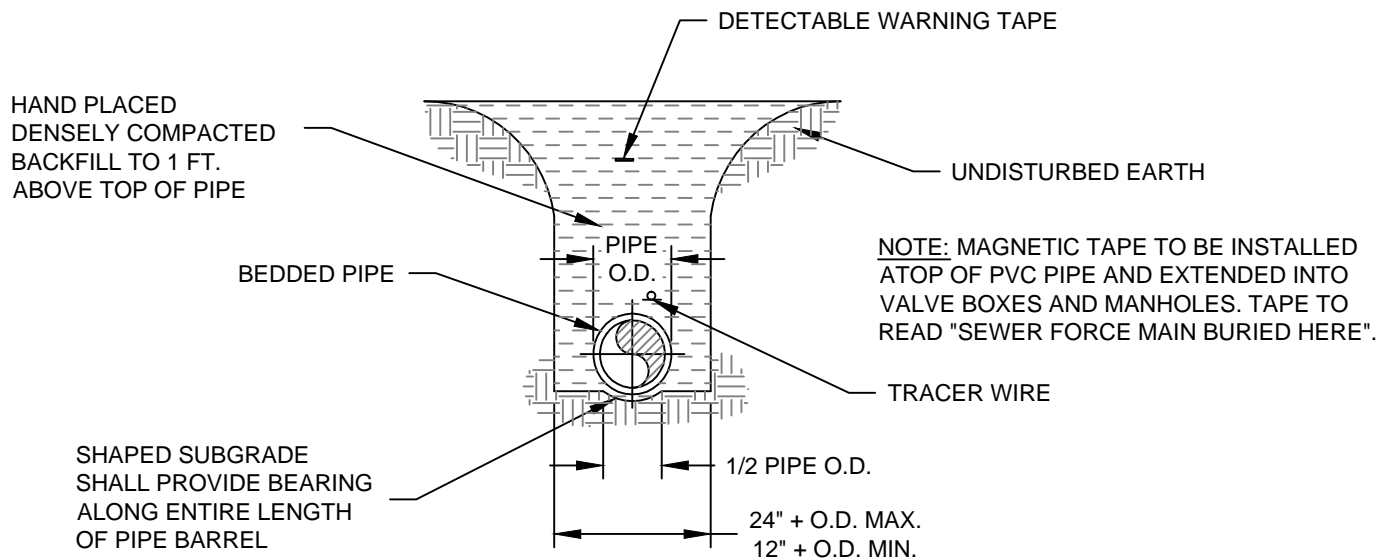
NOTES:

1. MAIN SHALL BE DUCTILE IRON PIPE 10 FT. CENTERED ACROSS MANHOLE
2. AIR VALVE ASSEMBLY SHALL BE: CRISPIN, CLA-VAL, OR EQUAL.

REVISED		MOORE COUNTY PUBLIC WORKS ENGINEERING DIVISION	AIR RELEASE VALVE MANHOLE	STD NO.  PS-8
DATE	DESCRIPTION			



NOTE: PIPE SHALL BE BEDDED UP TO SPRING LINE AND MINIMUM 4" BELOW BOTTOM OF PIPE WHEN WET AREAS ARE ENCOUNTERED.

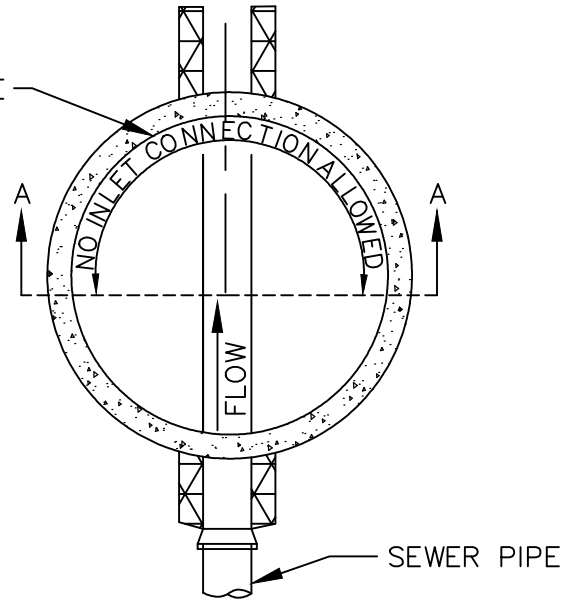


NOTE:  
FORCE MAINS 8"Ø AND SMALLER SHALL HAVE MINIMUM OF 3' COVER. FORCE MAINS LARGER THAN 8"Ø SHALL HAVE A MINIMUM OF 3'-6" COVER.

REVISED		MOORE COUNTY PUBLIC WORKS ENGINEERING DIVISION	PIPE LAYING FORCE MAIN	STD NO.  PS-9
DATE	DESCRIPTION			

## SECTION PLAN

NO REVERSE  
ANGLES



EXPOXY LINE  
MANHOLE

STANDARD  
MANHOLE

45° BEND AIMED  
AT INVERT OUT

3" MIN.

FLEXIBLE MANHOLE  
SLEEVE OR ENTRANCE  
JOINT

PIPE SUPPORT 2" O.C.  
AND 6" FROM EACH  
FITTING

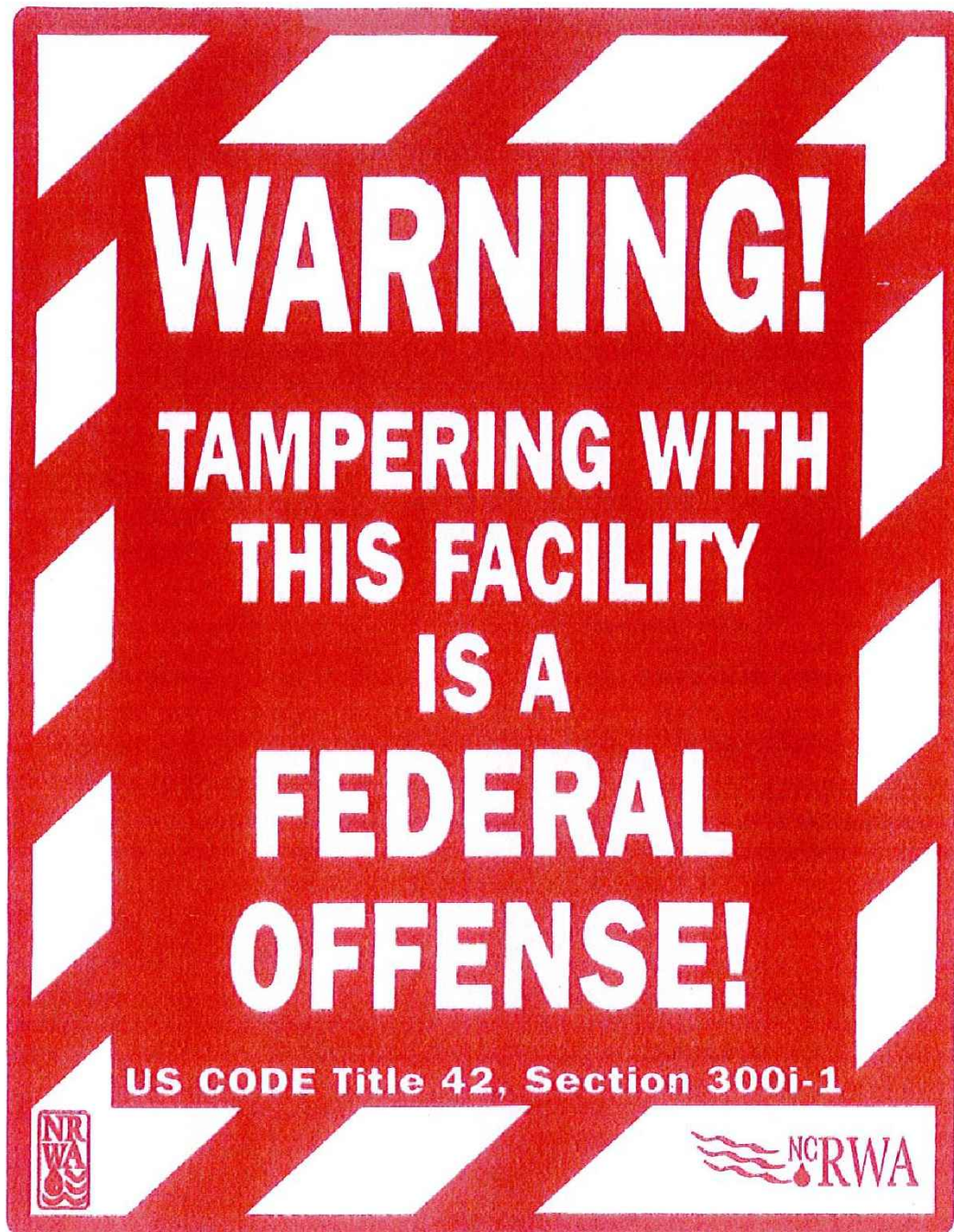
## SECTION A-A

## FORCE MAIN CONNECTION

(NTS)

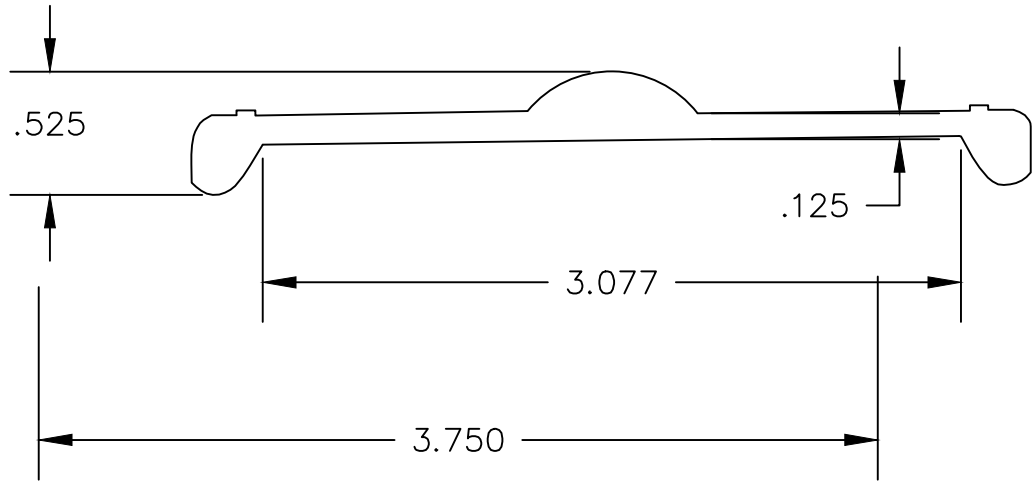
UNEXCAVATED

REVISED		MOORE COUNTY PUBLIC WORKS ENGINEERING DIVISION	MANHOLE FORCE MAIN CONNECTION	STD NO.  PS 10
DATE	DESCRIPTION			



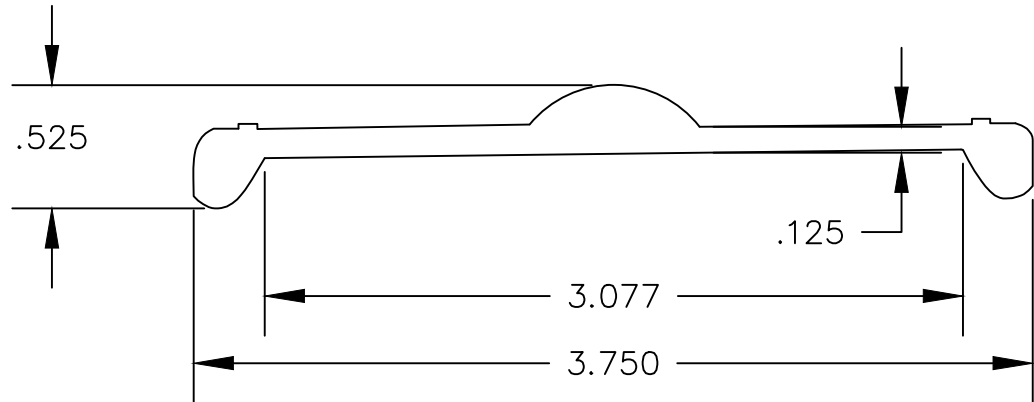
**REPORT SUSPICIOUS ACTIVITY TO:**

REVISED		MOORE COUNTY PUBLIC WORKS ENGINEERING DIVISION	SAFETY PLACARD	STD NO.  PS-11
DATE	DESCRIPTION			



- Vinyl: White (Flooded Green)
- Size: 2-7/8" x 15"
- Colors: "Warning" is green and set against a white box. All other text and graphics (except "811" logo) are set against a green background.
- Color 811 Logo: 100% PMS black background/ outline. "Know what's below. Call before you dig" is 100% PMS black.
- Shovel: 45% PMS black
- Shovel Highlights: 20% PMS black
- 811 type: Pantone 390C
- Top Arcs: Pantone 370C
- Bottom Arcs: 7505C

REVISED		MOORE COUNTY PUBLIC WORKS ENGINEERING DIVISION	AIR RELEASE MARKER POST	STD NO.  PS-12
DATE	DESCRIPTION			



- Vinyl: White (Flooded Green)
- Size: 2-7/8" x 15"
- Colors: "Warning" is green and set against a white box. All other text and graphics (except "811" logo) are set against a green background.
- Color 811 Logo: 100% PMS black background/ outline. "Know what's below. Call before you dig is 100% PMS black.
- Shovel: 45% PMS black
- Shovel Highlights: 20% PMS black
- 811 type: Pantone 390C
- Top Arcs: Pantone 370C
- Bottom Arcs: 7505C

REVISED		MOORE COUNTY PUBLIC WORKS ENGINEERING DIVISION	FORCE MAIN WARNING POST	STD NO  PS-13
DATE	DESCRIPTION			

**FOR EMERGENCY**  
**CALL**  
**(910) 947-6315**

---

STATION NAME

---

STREET ADDRESS

TOWN, NC ZIP

NOTE;  
SIGN TO BE 2' WIDE x 3' HIGH, BLACK LETTERING AND REFLECTIVE  
"FOR EMERGENCY" AND "(910) 947-6315" ARE 4" HIGH.  
OTHER WORDS ARE 3" HIGH

REVISED		MOORE COUNTY PUBLIC WORKS ENGINEERING DIVISION	IDENTIFICATION SIGN	STD NO.  PS-14
DATE	DESCRIPTION			



NOTE;  
SIGN TO BE 3' WIDE x 3' HIGH, BLACK LETTERING  
AND REFLECTIVE, ALL WORDS TO BE 4" IN HEIGHT.

REVISED		MOORE COUNTY PUBLIC WORKS ENGINEERING DIVISION	CONFINED SPACE SIGN	STD NO.  PS-15
DATE	DESCRIPTION			