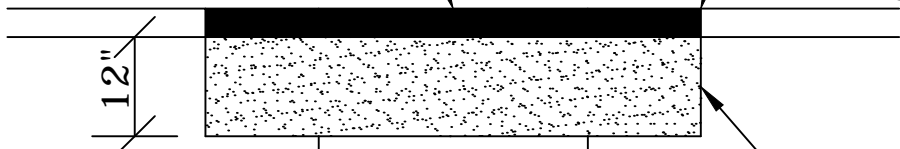


2" ASPH. CONC. SURF. COURSE

SAW TO NEAT  
EDGE

EXISTING PAVEMENT

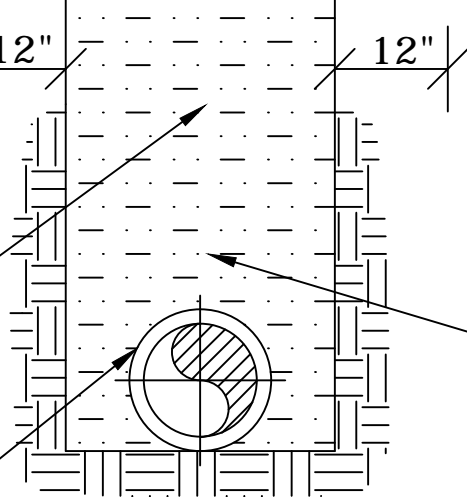


12" COMPACTED  
NEW ABC MATERIAL

SELECTED BACKFILL  
TAMPED IN 6" LIFTS

COMPACT TO 95% OF  
MAXIMUM DRY DENSITY  
AS DETERMINED BY  
AASHTO METHOD T-99.  
MECHANICAL TAMPER  
SHALL BE REQUIRED.

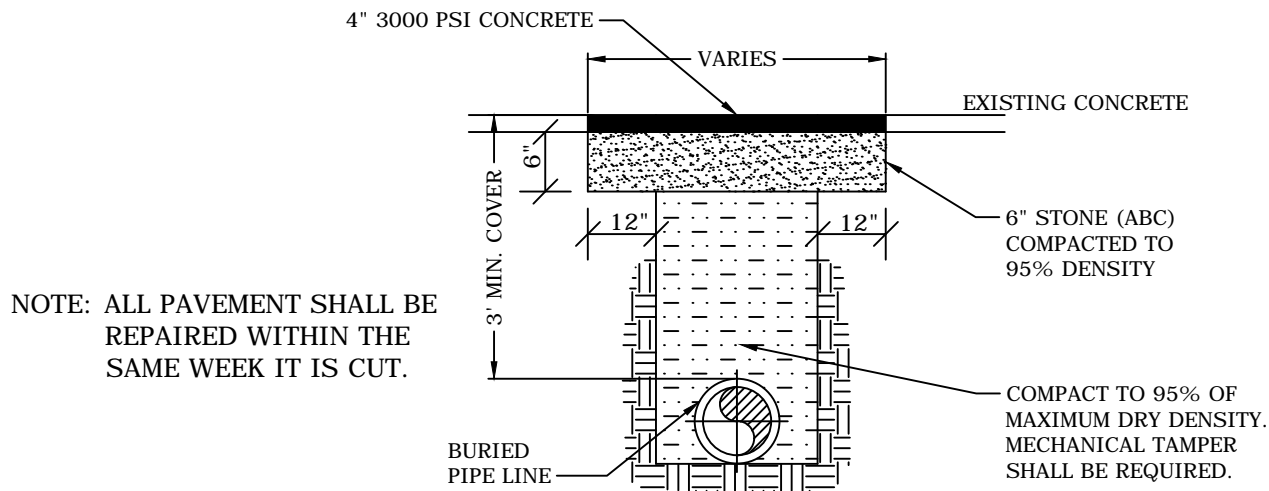
BURIED  
PIPE LINE



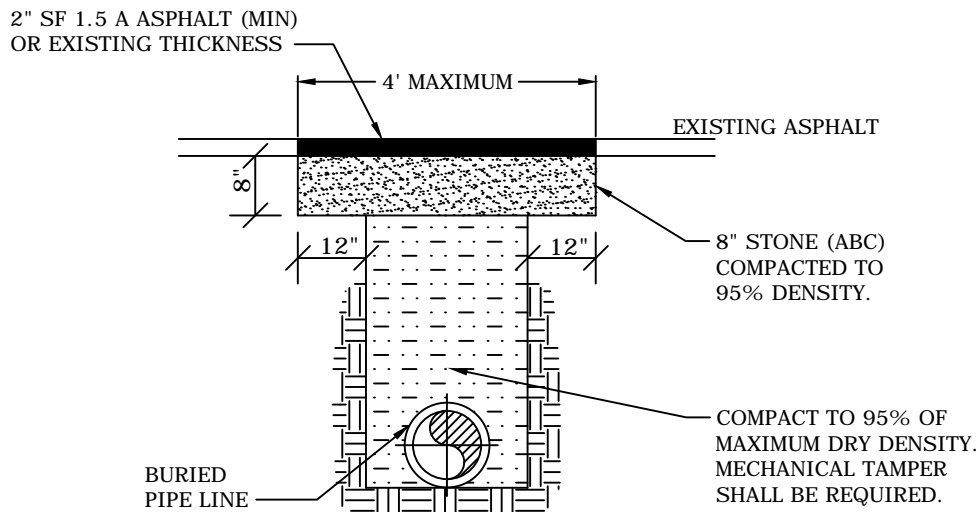
**ASPHALT REPAIRS FOR ROADWAYS**

NOT TO SCALE

<b>REVISED</b>		<b>MOORE COUNTY PUBLIC WORKS ENGINEERING DIVISION</b>	<b>ROADWAY PAVEMENT OPEN CUT &amp; PATCH</b>	STD NO.  GC-1
DATE	DESCRIPTION			
MAY, 2020	JAL			

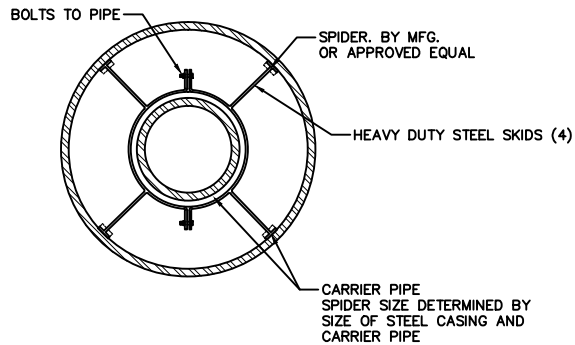
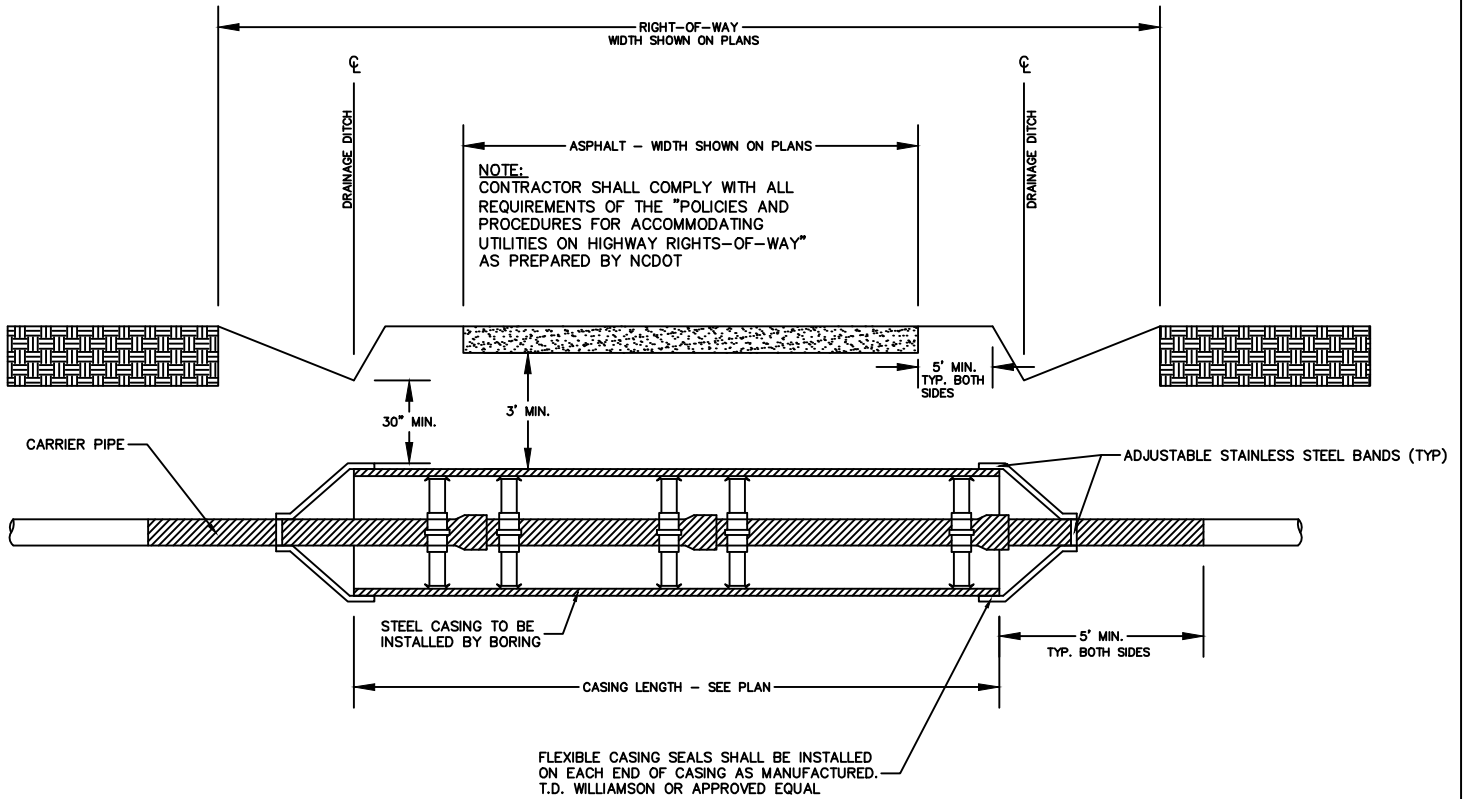


CONCRETE DRIVEWAY OPEN CUT AND PATCH

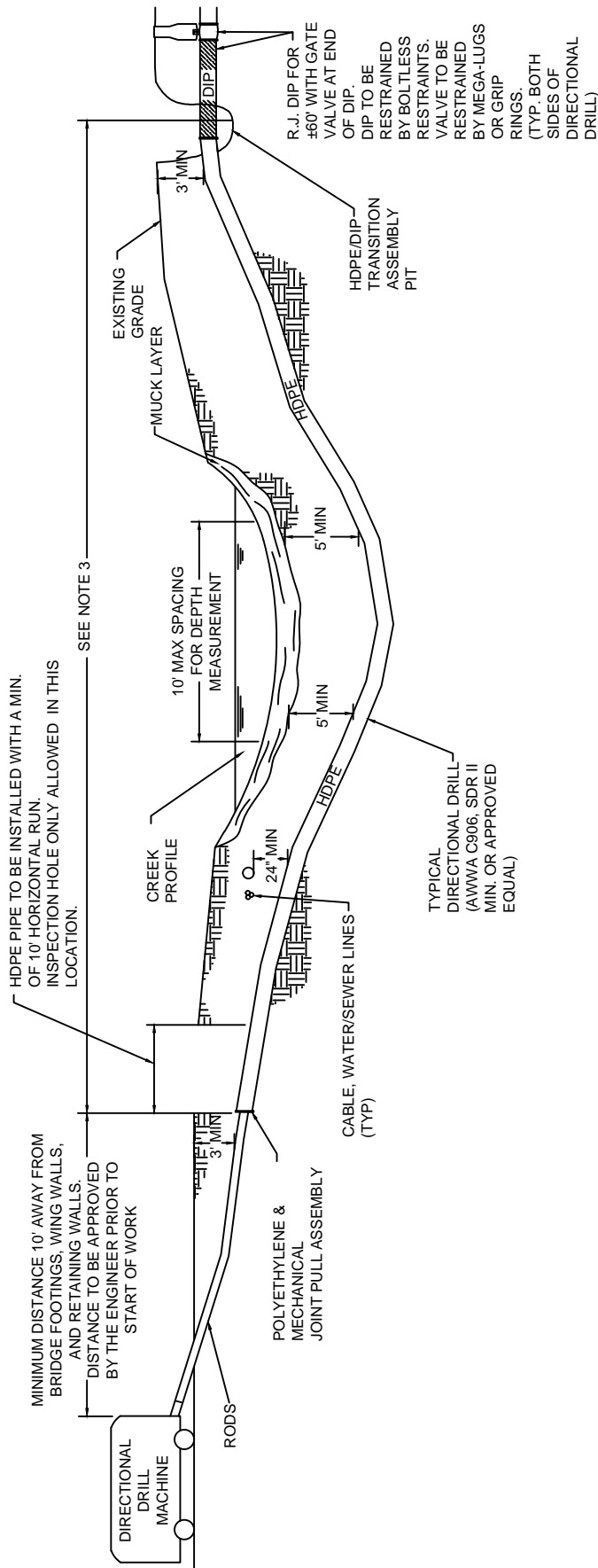


ASPHALT DRIVEWAY OPEN CUT AND PATCH

REVISED		MOORE COUNTY PUBLIC WORKS ENGINEERING DIVISION	DRIVEWAY PAVEMENT OPEN CUT & PATCH	STD NO. GC-2
DATE	DESCRIPTION			



REVISED		MOORE COUNTY PUBLIC WORKS ENGINEERING DIVISION	STANDARD BORE ENCASEMENT	STD NO. GC-3
DATE	DESCRIPTION			



- NOTES:
1. A PROFILE AND PLAN SHALL BE PROVIDED FROM ENTRY TO EXIT FOR EACH DIRECTIONAL DRILL SECTION BY THE DIRECTIONAL BORE CONTRACTOR.
  2. ALL BORE SECTIONS SHALL BE HYDROSTATICALLY TESTED PER SPECIFICATION STANDARDS UPON COMPLETION OF INSTALLATION AND PRIOR TO PLACING THE WATER MAIN ON-LINE.
  3. LENGTH OF CROSSING, LOCATION OF INSPECTION/OBSERVATION EXCAVATION, NUMBER OF PIPE, LOCATION OF BORE MACHINE, AUGER ENTRANCE LOCATION AND TIE-IN POINTS ARE TO BE APPROVED BY THE ENGINEER PRIOR TO ANY START OF WORK.
  4. THIS DETAIL IS ALSO APPLICABLE TO STREAMS, WETLANDS, LARGE STORM DRAINS, AND SIMILAR APPLICATIONS FOR DIRECTIONAL DRILL WITH POLYETHYLENE PIPE.

REVISED	
DATE	DESCRIPTION

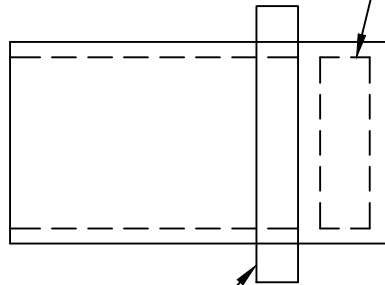
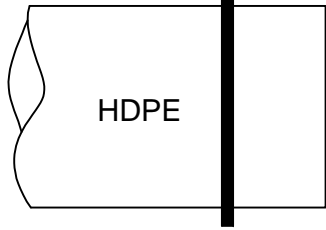
**MOORE COUNTY PUBLIC WORKS  
ENGINEERING DIVISION**

**DIRECTIONAL DRILL  
HDPE**

**STD NO.  
GC-4**

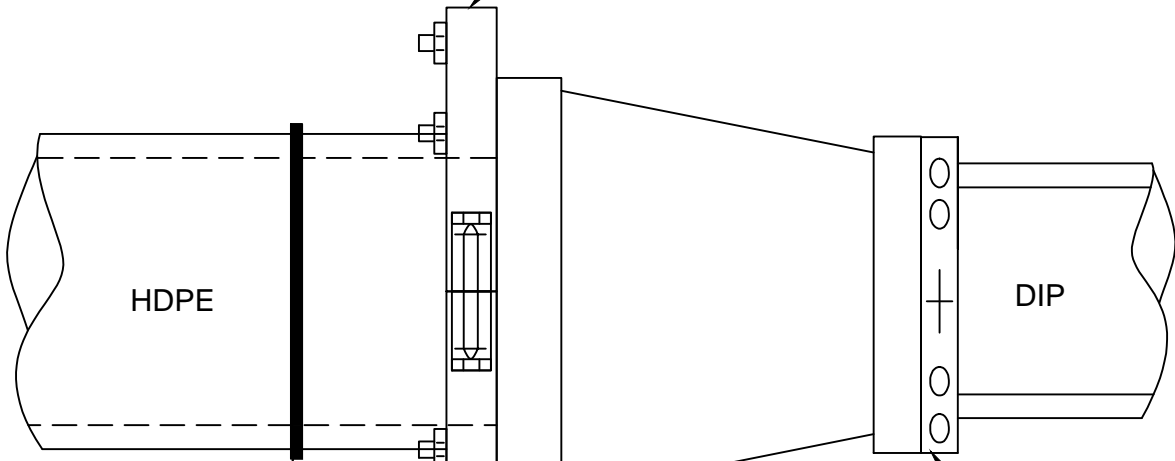
HDPE FUSED JOINT

STAINLESS STEEL SLEEVE INSERT



HDPE/MJ TRANSITION FITTING

SPLIT MJ GLAND



HDPE FUSED JOINT

REDUCER

MEGA - LUG

REVISED		MOORE COUNTY PUBLIC WORKS ENGINEERING DIVISION	HDPE/DIP TRANSITION ASSEMBLY	STD NO. GC-5
DATE	DESCRIPTION			